



Diocesan Board of Education



AGENDA 27 Nov

- [SIAMS](#)
- [Spiritual Retreats](#)
- [Bishop's Badge](#)
- [CPD Programme 2024-25](#)
- [New Heads/HOS Induction](#)
- [Annual Return](#)
- [Eco Schools](#)
- [Advent](#)
- [Fairtrade Fortnight 2025](#)
- [Christian Aid Resources](#)
- [Governance](#)
- [Understanding Christianity](#)
- [Future Briefing Dates – Collective Worship](#)
- [Future Briefing dates – Governor](#)
- [Contact Details](#)

SIAMS List 2024-25



Breadsall CE Primary School
Calow CE Primary School
Chapel en le Frith CE Primary School
Charlesworth VC Primary School
Earl Sterndale CE Primary School
Elton CE Primary School
Fitzherbert CE Primary School
Hathersage St Michael CE Primary School
Kirk Ireton CE Primary School
Long Lane CE Primary School

Mapperley CE Primary School
Newton Solney CE Infant School
Norbury CE Primary School
Scargill CE Primary School
Stanton in Peak CE Primary School
Stretton Handley CE Primary School
Turnditch CE Primary School

16 schools inspected so far this year

SIAMS – Statutory Inspection of Anglican
and Methodist Schools

WEBSITE [HERE](#)

SIAMS PREP

- Please do contact me if you would like a visit.
- I am happy to review SEFs, websites etc
- During visits I am happy to speak with pupils or staff.
- liz.Seymour@derby.anglican.org
- List for 2025-26 should be available just before Easter 2025.

5 Year Plan – SIAMS Plan

Ongoing	2 years before going on the list	1 year before going on the list	Inspection Year	Year Following Inspection
<ul style="list-style-type: none"> Examine theologically underpinning of the Christian Vision that recognises the unique position of the school as well as the vocational pull of the school leaders. Engage in honest reflection of the regarding the appropriateness of the vision Ensure the school vision is rooted in theology beyond a single Bible story verse and be clear what theology that is and what it looks like in a school setting Move beyond values and towards vision in the focus of the school and its work if not already done this Look at all aspects of school life through the lens of your vision (including CW, RE, curriculum) 	<ul style="list-style-type: none"> Ensure theological rooting of distinctive Christian vision outlined and communicable to those outside the school community. Ensure whole schooled approaches to aspects of school life are embedded, such as a whole school language and approach to spiritual development and corresponding statement/policy Governors engage in monitoring and evaluation of impact of the school's distinctively Christian theologically rooted vision, sharing examples and responding to findings (move beyond just RE and CW monitoring) Begin embedding responding to IQ5. Pupils should be able 	<ul style="list-style-type: none"> Theological rooting of Christian Vision well-embedded and can be illustrated with context specific examples Create a document that explains the theology your vision is rooted in greater detail and ensure all leaders familiarise themselves with this and can talk confidently about the theology the vision is rooted in Put your SEF together with a focus on impact Audit the school curriculum <u>in light of</u> the existing vision and taking account of diversity and difference, and spirituality All staff engage in reflection on how their own roles live out and express the vision and how the vision nurtures them 	<ul style="list-style-type: none"> Preparation for initial phone call Consideration of who will be part of inspection and all parties briefed. Ensure all inspection paperwork is done SEF, relevant policies (CW, RE, Behaviour, MH, Spirituality Statement or policy), Latest IDSR, SDP/SIP, Explanation of vision Share the SEF with all key stakeholders Encourage governors to make notes about their own monitoring and evaluation and evaluating the impact of the vision. Ensure all the school leaders and governors know the school's theologically rooted vision and can articulate the theological roots behind it. 	<ul style="list-style-type: none"> Address all priority areas Create long term plan for embedding any aspects of Church School distinctiveness found to be missing or weak during inspection practice Share exemplary practice

5 Year Plan – SIAMS Plan

<p>accountability, behaviour, attendance, family support)</p> <ul style="list-style-type: none"> Attend DBE briefings/training regularly to hear key messages re SIAMS and Church School Distinctiveness Ensure all staff new to Church Schools are aware of the difference being part of a church school community makes Ensure all new senior leaders are known to the DBE and are engaging with CPD 	<p>to articulate how they themselves tackle injustice themselves and this should be beyond fundraising.</p> <ul style="list-style-type: none"> Audit RE Provision and ensure the Statement of Entitlement for RE is being met/will be met Invite governors to undertake the online SIAMS course Consider what training SLT/ RE/CW leads need <u>in regard to</u> SIAMS Consider what support from the DBE would be most helpful 	<p>personally and professionally.</p> <ul style="list-style-type: none"> Create case studies of the impact of the vision (especially for vulnerable pupils or families and diversity being considered). Ensure courageous advocacy has moved beyond fundraising. Ensure all relevant staff and governors are attending DBE training associated with SIAMS. Ensure all staff and governors are familiar with current SIAMS framework Buy in SIAMS support as needed Communicate with DBE regularly and share what you are doing so we can inform the inspectors. Check the Statement of Entitlement for RE is being met and local and national RE developments are 	<ul style="list-style-type: none"> Ensure all school leaders and governors can provide the examples and evidence of the impact of the vision taking the IQs into account. Check the 3 Is for CW – inclusive, invitational and inspirational Ensure all staff and governors are familiar with the Statement of Entitlement for RE 	
		<p>taken into consideration</p>		

Spiritual Retreats

- Do you find life in the classroom as tiring as it is stimulating?
- Would you like time to rest, read, reflect and recharge?
- In a new initiative, the Association for the Promotion of Retreats (APR) has made a number of bursaries available to support teachers and headteachers across the UK in making a retreat at any APR For more information or an application form member retreat house.
- WEBSITE [HERE](#)
- For more information or an application form please apply through the retreat house of your choice as listed on promotingretreats.org/where or contact the APR Administrator (promoting.retreats@gmail.com)

Bishop's Badge 2024-25



- Date : Monday 23 June 2025 Derby Cathedral 10:45am
- Who is this for? Children who have demonstrated the Diocesan Values of Generous Faith; Courageous Hope or Life Giving Love
- Please hold the date. There will be a letter from Bishop Libby in February inviting you to nominate a child.

CPD Programme 2024-25

- Subject Knowledge (Judaism and Sikhi)+ Understanding Christianity
- Headteacher Conference – Tuesday 10 June 2025 Courageous Advocacy
- ECTs – two sessions in the spring and summer
- Subject Leadership – New to RE Leadership – three sessions, Primary Development Training
- SIAMS – General framework training
 - IQ sessions focused on each question so if that is a specific area to develop
- Governor Training – role of governor, monitoring and evaluation
- Pupil Day – Tuesday 24 June 2025 in the Derby Area Y5/6 Pupils
- Are there areas that are missing? How can we make this accessible for you and your staff?
- WEBSITE LINK [HERE](#)

SIAMS FRAMEWORK TRAINING

- **SIAMS Framework Training**
- This training is useful to any member of staff or governor in your school. It is a 2-hour session and explains the whole of the new framework and what to expect in terms of the practicalities of a SIAMS inspection. It will look at the SEF and monitoring and evaluation, as well as giving you an opportunity to think about what your action points may be for each of the inspection questions.
- This training is useful for anyone who wants to be able to get to know the new framework better or for anyone who is new to the SIAMS process.
- Please note that all the sessions below are the same, different times have been offered to make it as accessible to as many people as possible.
- Monday 24 February 2025, 13:00 - 15:00 Online
- Tuesday 06 May 2025, 16.30 -18:30 Online
- Fee: PA £25 / Non PA £40
- Booking form [HERE](#)

Governor Training



DBE Governor Two Part Training Programme

Sessions are held online 18:00 - 20:00

Part 1 Thursday 06 March 2025

Part 2 Tuesday 03 June 2025 with Debbie Yeomans from RE Today

This programme is essential for any new governors and for those who have not accessed DBE training for a while and would benefit from refreshing their knowledge of what it means to be a governor of a church school. This course will give you the firm foundations you need to carry out your role effectively as well as networking and discussion time with other governors in the diocese.

This is for ANY governor of a church school not just foundation governors.

These sessions will be led by Liz Seymour, the Deputy Director for Education and Debbie Yeomans from RE Today Through the programme you will explore:

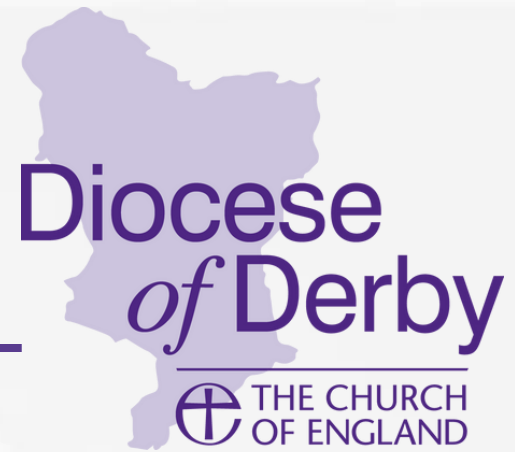
- What a church school is (and is not)
- The importance of ethos and vision
- RE in a church school
- SIAMS
- Collective Worship

Fee for both sessions: PA £125 / Non PA £250 (per school)

PA £25 / Non PA £40 (individual governor)

Booking Form [HERE](#)

Governor Training



Monitoring and Evaluation Webinar

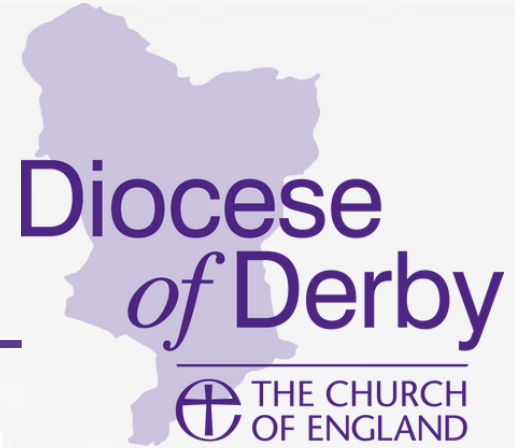
You will explore diverse ways to monitor and evaluate the Christian Distinctiveness of the school including Collective Worship. This is an online training session and runs from 18:00 - 20:00

- Tuesday 20 May 2025

Fee: PA £25 / Non PA £40

Booking form [HERE](#)

New Headteachers and HOS



RE Ethos & SIAMS Workshop – Debbie Yeomans & Liz Seymour
Thursday 30 January 2025, 13:30 – 16:00
Online

Please do let us know if you have a new head of school who would like to attend.

ANNUAL RETURN



Huge thank you for all those who have completed this.

It ensures our database IS KEPT UP TO DATE.

Carolyn and I will be reviewing the answers and coming back to you with actions that we will complete.

School office [HERE](#)

Clerk to governors [HERE](#)

Headteacher, chair and ex officio foundation governor [HERE.](#)

ECO SCHOOLS

- Lets Go Zero Website [HERE](#)
- Toolkits, information, webinars and competitions. Last year they had a Countdown to Climate Action month.

ECO SCHOOLS – Grants



School grants available [here](#)

Local School Nature Grants from learning Through Landscapes [HERE](#)

What do bird boxes, bee hotels, and nature experts all have in common? They're all available for free as part of our Local School Nature Grants programme, supported by players of the People's Postcode Lottery.

Open to schools and early years settings in England, Scotland and Wales, this outdoor learning grant fund has four elements – an outdoor learning training course for your staff, a school grounds climate survey, a Climate Curriculum Kit (valued at £150) and £500 of outdoor equipment chosen from a catalogue of over 100 items.

Learn more about the grants below or head straight to the application portal.

ECO SCHOOLS

- Webinars from the Church of England
- Webpage - [Webinars on getting to net zero carbon | The Church of England](#)
- There are a couple aimed at schools for leaders/school business managers but also there is one about bee species. They are now watch on demand.
- [Helping schools cut their carbon](#)
- [Learning from net zero action plan for schools](#)

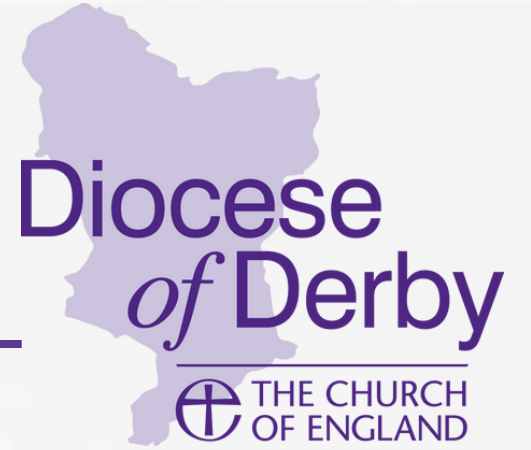
ECO SCHOOLS

New tool to help schools reduce carbon

A new Energy and Buildings Self Audit Tool for schools aims to help schools understand their buildings better and to start decarbonisation plans.

A new video, filmed at Barnwood CofE Primary School in Gloucester and St Christopher's CofE High School in Accrington, showcases the new tool and shares what the teachers, staff and pupils are doing to care for creation. Watch the video [here](#) and find out more about the new Energy and Buildings Self Audit Tool, plus other resources [here](#).

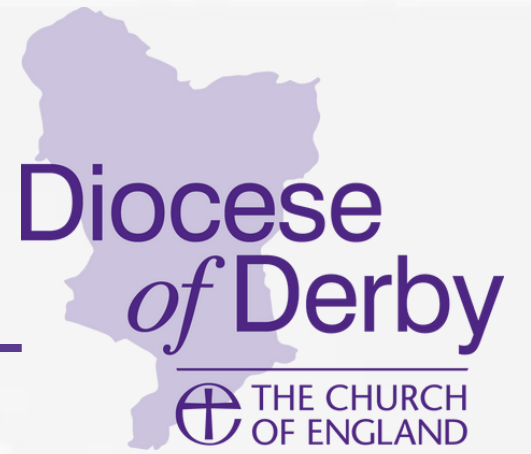
ADVENT RESOURCES



Advent 2024 Follow The Star Resources

Website [HERE](#) Aimed at KS2 and KS3 learners

FAIRTRADE FORTNIGHT 2025



22 September – 05 October 2025

Main website [HERE.](#)

Schools page [HERE](#)

CHRISTIAN AID

Website for Schools [HERE](#)

[Global Neighbours](#)

[Creative for Climate Justice](#)

[Primary Resources](#)

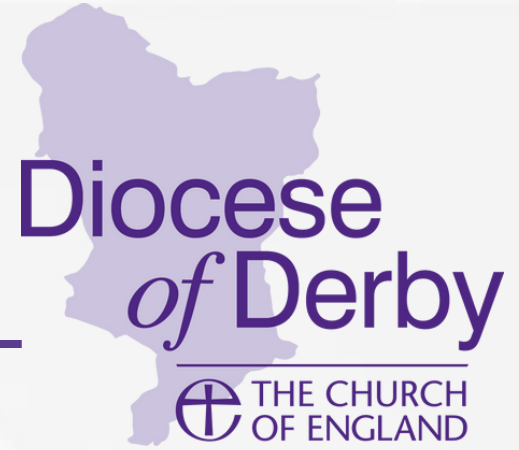
[Secondary Resources](#)

FOUNDATION GOVERNORS

- Website page with all the information about governance [HERE](#)

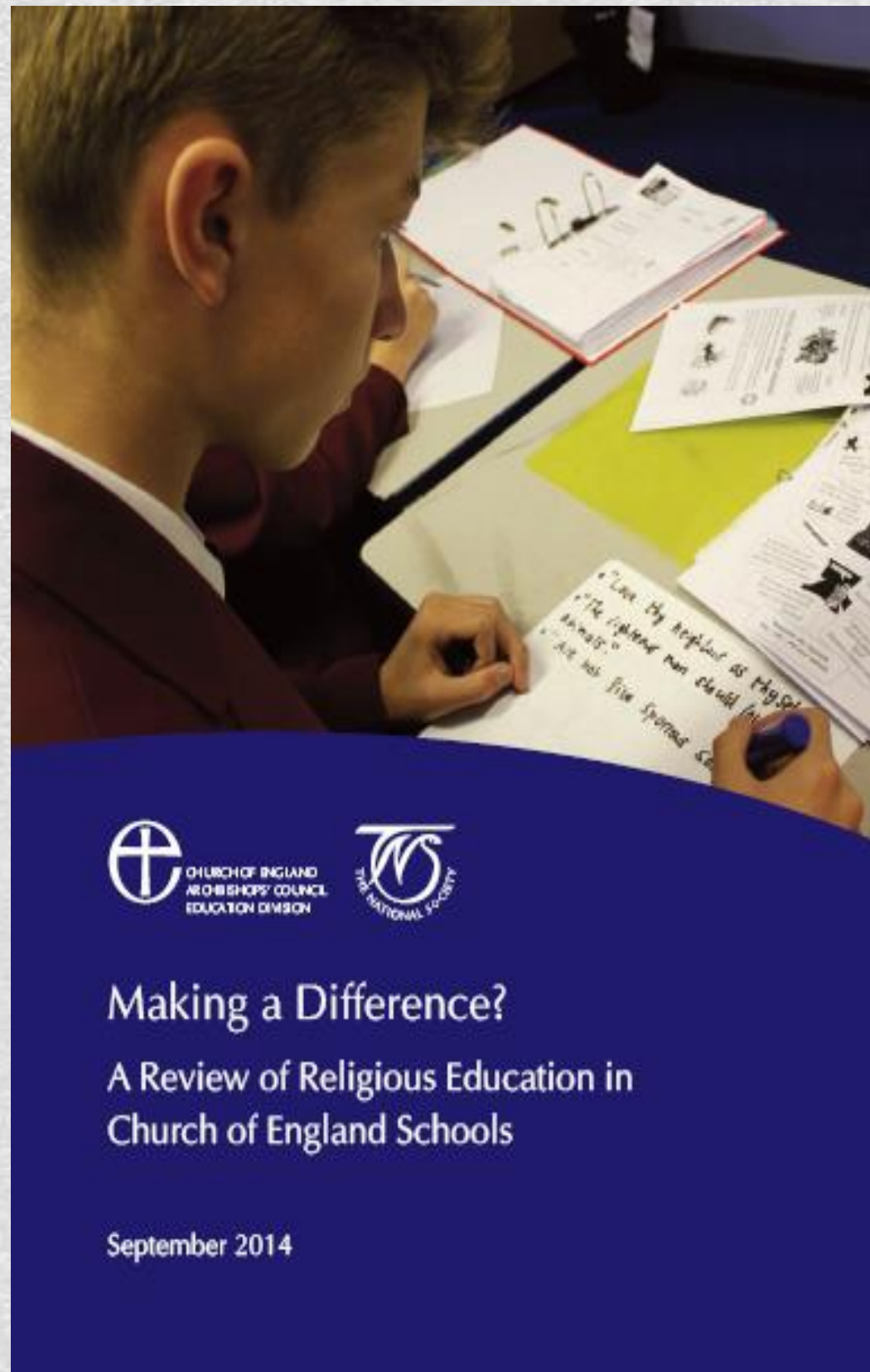
Nominations for terms of office ending	Closing date for receipt of paperwork	Papers published to the Board for approval	DBE Meeting date
Up to the end of June 2025	22 Jan 2025	05 Feb 2025	12 Feb 2025
Up to the end of October 2025	14 May 2025	04 Jun 2025	11 Jun 2025

UNDERSTANDING CHRISTIANITY



Rationale
Concepts
Spiral Curriculum
How it is taught
The Big Frieze
What it is not!

Website [HERE](#)



Making a Difference?

A Review of Religious Education in Church of England Schools

September 2014

Making a difference?

National Society (2014)

Called for:

- a more intellectually coherent and challenging curriculum with regard to teaching Christianity
- a programme to raise the level of pupils' religious literacy
- to develop pupils' 'ability to think theologically and engage in theological enquiry'.

***Understanding Christianity* response:**

- Reduce content – depth rather than breadth
- Coherent content selection
- Spiral curriculum
- Explore the impact on Christian living today
- Weave in personal reflection and response

Key purpose

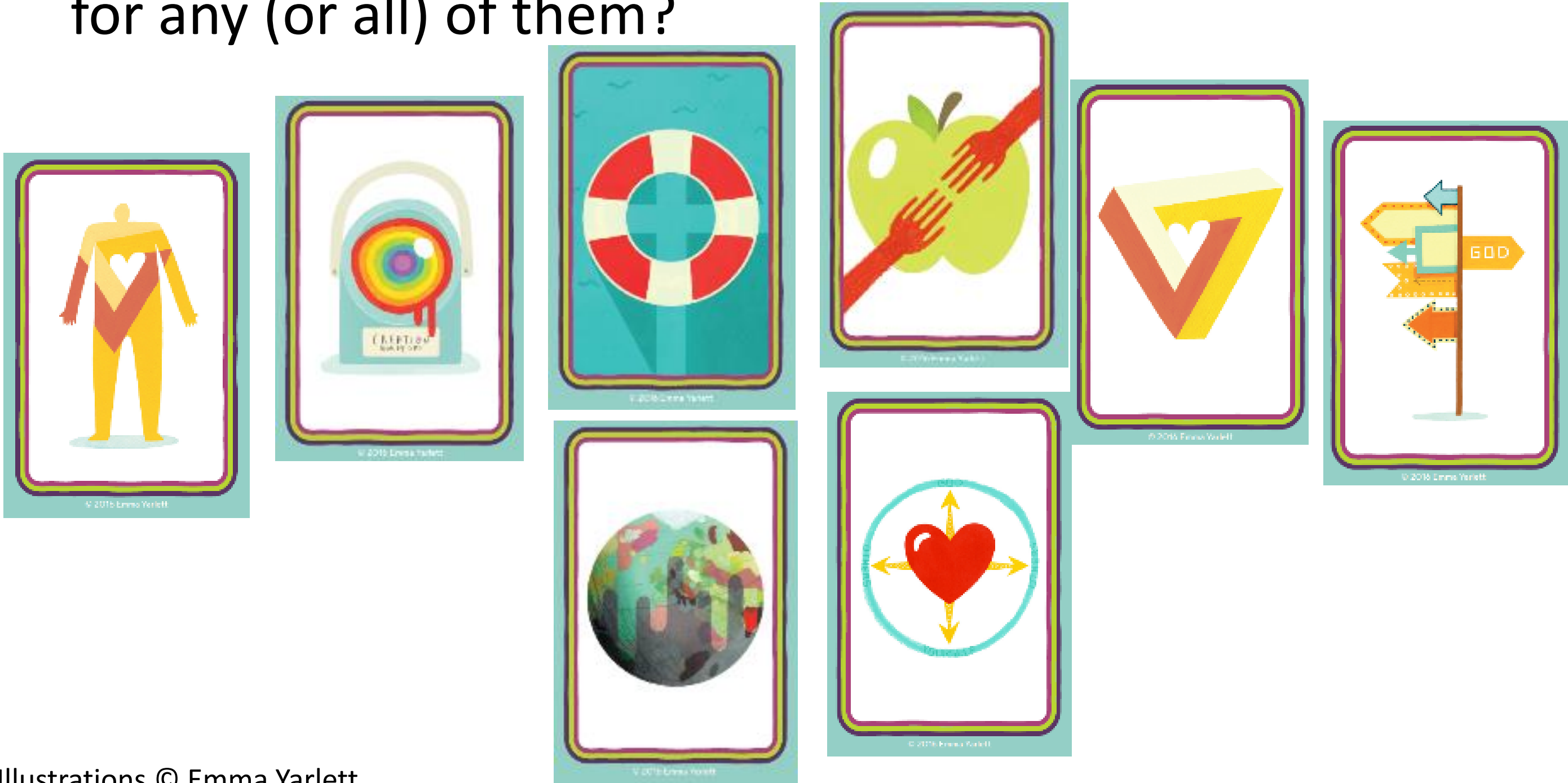
To support pupils in developing their understanding of Christianity, as a contribution to their understanding of the world and their own experience within it.

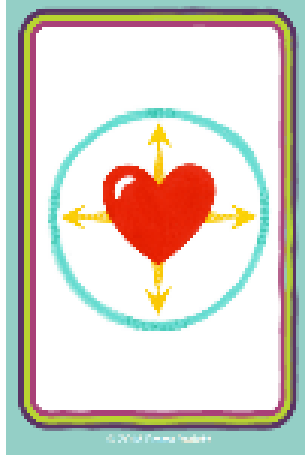
Aims

- To enable pupils to know about and understand Christianity as a living world faith, by exploring core theological concepts
- To enable pupils to develop knowledge and skills in making sense of biblical texts and understanding their impact in the lives of Christians
- To develop pupils' abilities to connect, critically reflect upon, evaluate and apply their learning to their own growing understanding of Christianity, of religion and belief more widely, of themselves, the world and human experience.

Something to do...

- Look at the cards
- Can you identify a Christian concept for any (or all) of them?

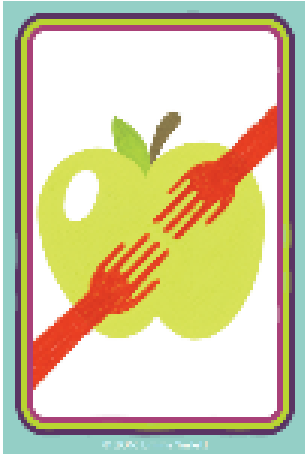




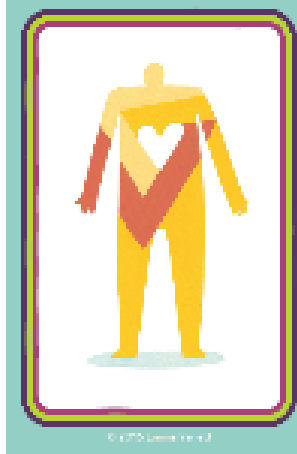
Gospel



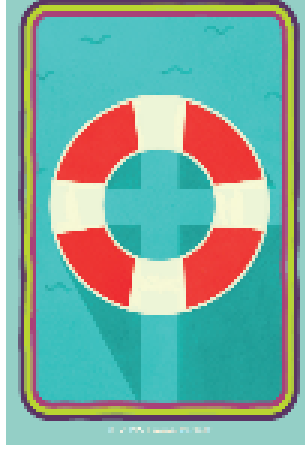
God



Fall

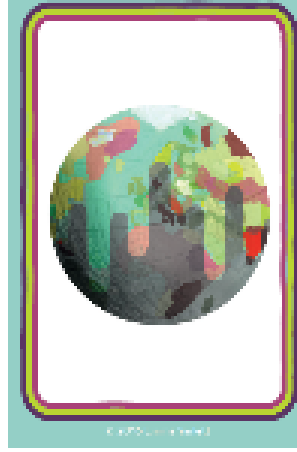


Incarnation

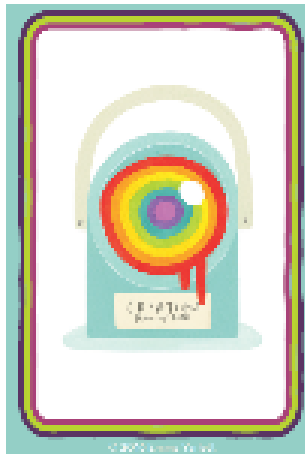


Salvation

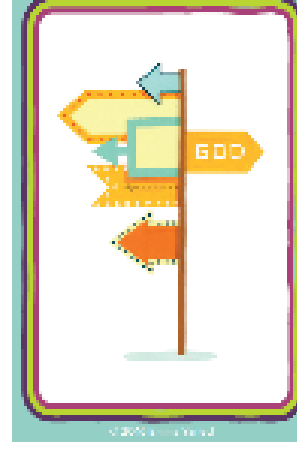
Today 2016



Kingdom of God



Creation



People of God



God

Creation

Fall

People of God

Incarnation

Gospel

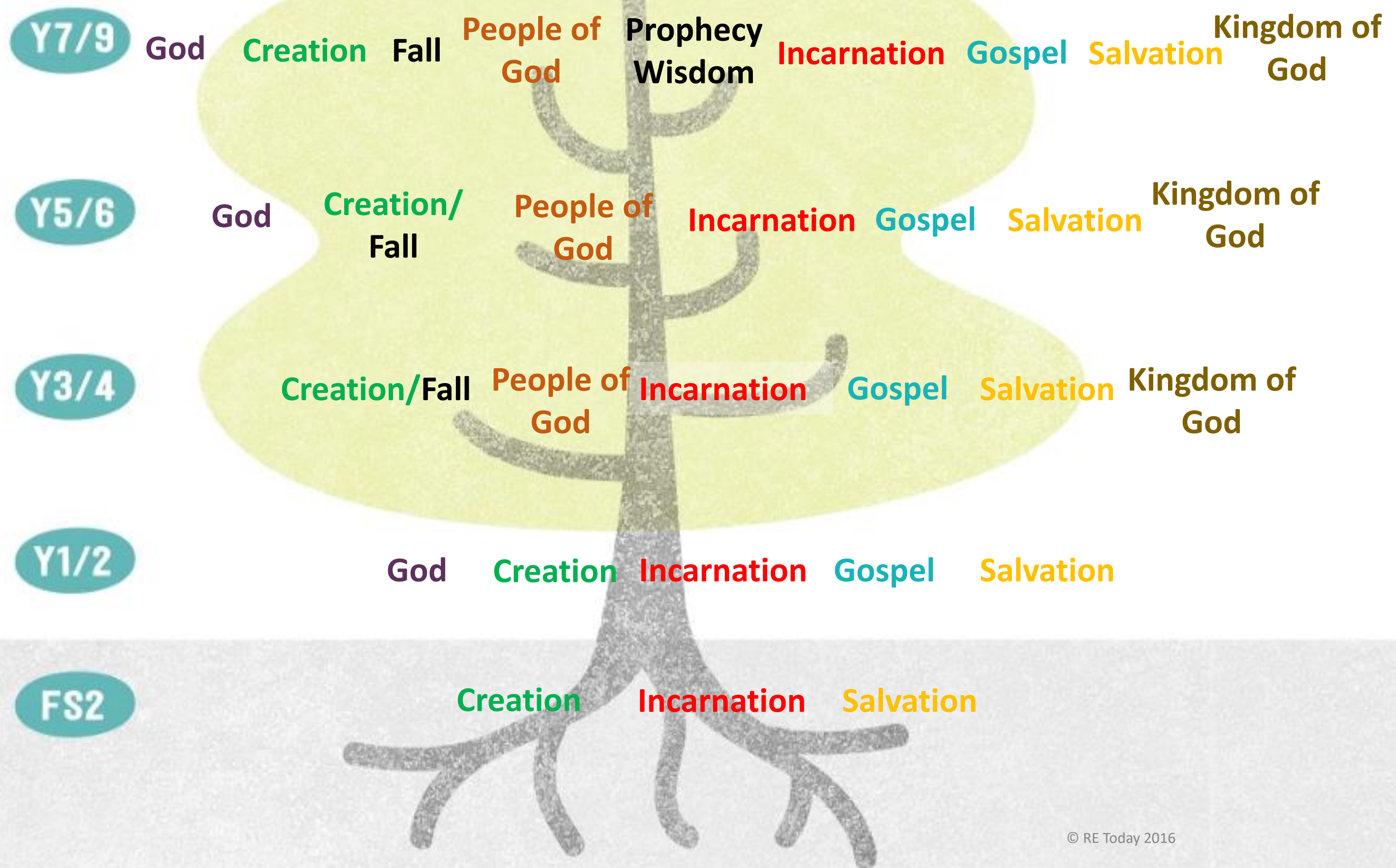
Salvation

Kingdom of God

© Emma Yarlett 2016

Core concepts and key questions

CONCEPT	FS2	Y1/2	Y3/4
GOD		1.1 What do Christians believe God is like?	(See 2a.3 Trinity/ Incarnation)
CREATION	F1 Why is the word 'God' so important to Christians?	1.2 Who made the world?	2a.1 What do Christians learn from the Creation story?
FALL			
PEOPLE OF GOD			2a.2 What is it like to follow God?



MAKING SENSE OF THE TEXT

Developing skills of reading and interpretation; understanding how Christians interpret, handle and use biblical texts; making sense of the meanings of texts for Christians



MAKING CONNECTIONS

Evaluating, reflecting on and connecting the texts and concepts studied, and discerning possible connections between these and pupils' own lives and ways of understanding the world.

© RE Today 2016



UNDERSTANDING THE IMPACT

Examining ways in which Christians respond to biblical texts and teachings, and how they put their beliefs into action in diverse ways within the Christian community and in the world.



8. EXPLORING THE RESOURCE MATERIALS

Essential information

- Background for teachers
- Links
- Resources

Digging deeper

Core learning

Outcomes

Building blocks

Teaching and learning

You might like to start with... suggestions

The image shows a stack of resource sheets for a lesson on 'SALVATION'. The top sheet is titled 'SALVATION' and 'WHAT DIFFERENCE DOES THE RESURRECTION MAKE FOR CHRISTIANS?'. It features several sections:

- ESSENTIAL INFORMATION**: A small box at the top left of the sheet.
- DIGGING DEEPER**: A section with 'OUTCOMES' and 'YOU MIGHT LIKE TO START WITH...'.
- CORE LEARNING**: A large section with 'OUTCOMES', 'YOU MIGHT LIKE TO START WITH...', 'MAKING SENSE OF THE TEXT', 'UNDERSTANDING THE IMPACT', and 'MAKING CONNECTIONS'.
- KNOWLEDGE BUILDING BLOCKS**: A section at the bottom left.

Arrows from the surrounding text point to these sections: 'Digging deeper' points to the 'DIGGING DEEPER' section; 'Core learning' points to the 'CORE LEARNING' section; 'Outcomes' points to the 'OUTCOMES' section; 'Building blocks' points to the 'KNOWLEDGE BUILDING BLOCKS' section; 'Teaching and learning' points to the 'MAKING CONNECTIONS' section; and 'You might like to start with... suggestions' points to the 'YOU MIGHT LIKE TO START WITH...' section.



The Big Frieze

E M M A Y A R L E T T

What this resource is *not*...

- It is not a complete RE curriculum
- It is not offering lesson plans
- It is not particularly easy!
- It is not an undergraduate degree course in theology
- It is not a study of the history of Christianity
- It is not an existential search approach
- It is not offering a philosophical or sociological approach to RE.

Why do we need the *Understanding Christianity* resource?

Past criticisms of teaching about Christianity in

- schools include:
- Atomised – little coherence for pupils
 - Not much progressive or systematic study of core beliefs
 - Pick n mix attitude to Jesus: not much theology, not much about Jesus as Saviour or Lord
 - Use Jesus' stories to explore personal feelings
 - Christianity as 'repository of answers'
 - Not much awareness of different interpretations
 - Little sense of place and context

Scrutiny throughout:

Project Directors – National Society/RE Today

- Jeremy Taylor
- Derek Holloway

Editorial advisory group

- Jane Chipperton
- Trevor Cooling
- Hazel Henson
- Zoë Keens
- Kate Penfold-Attride
- Olivia Seymour

Theological advisers:

- Professor David Ford

CE Faith and Order Commission:

- The Revd Canon Professor Loveday Alexander
- The Revd Canon Dr Charlotte Methuen
- The Revd Dr Jeremy Morris
- The Revd Canon Dr Jeremy Worthen

Church of England RE Development Group

Trial Diocesan advisers

Trial schools:

- **21 in Trial 1 (Approach and sample units);**
- **33 in Trial 2 (16 sample units)**

MAKING SENSE OF THE TEXT

Developing skills of reading and interpretation; understanding how Christians interpret, handle and use biblical texts; making sense of the meanings of texts for Christians

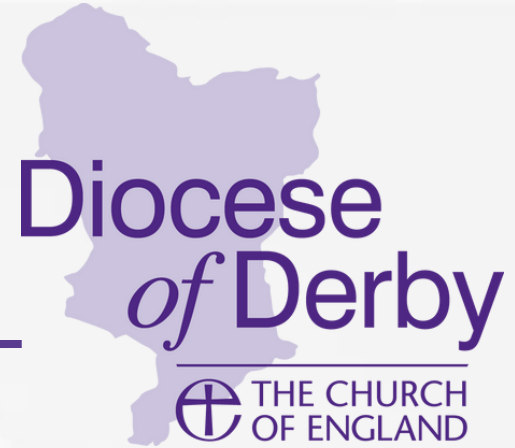
MAKING CONNECTIONS

Evaluating, reflecting on and connecting the texts and concepts studied, and discerning possible connections between these and pupils' own lives and ways of understanding the world.

UNDERSTANDING THE IMPACT

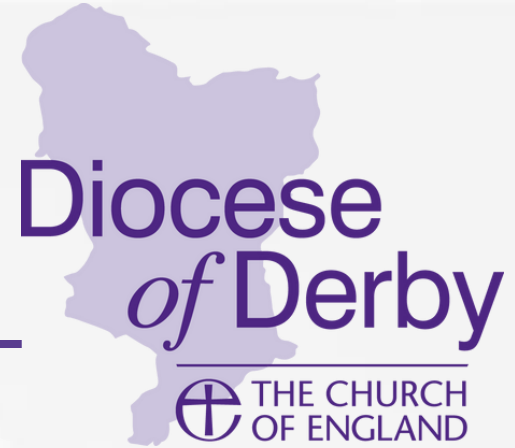
Examining ways in which Christians respond to biblical texts and teachings, and how they put their beliefs into action in diverse ways within the Christian community and in the world.

FUTURE BRIEFING DATES



- **Collective Worship Briefings 16:00-17:00**
- Tuesday 14 January 2025
- Monday 10 February 2025
- Tuesday 11 March 2025
- Monday 19 May 2025
- Monday 16 June 2025

FUTURE BRIEFING DATES



- **Governor Briefings 19:00-20:00**
- Wednesday 27 November 2024 – Understanding Christianity
- Monday 13 January 2025
- Tuesday 11 February 2025
- Thursday 13 March 2025 – The new Agreed Syllabus for RE
- Thursday 08 May 2025
- Monday 09 June 2025
- Wednesday 09 July 2025

Contact Details



Carolyn Shoyer carolyn.shoyer@derby.anglican.org 07596 855611

Liz Seymour liz.seymour@derby.anglican.org 01332 278142

Lindsey Bowe lindsey.bowe@derby.anglican.org 07443 802951

Jason Aldridge jason.aldridge@derby.anglican.org 01332 278135

Diocesan Prayer



Vision Prayer

Gracious God,
in your mercy and for your glory,
renew us, reshape us, revive us –
with generous faith, courageous hope and life-giving love –
that, in transformed lives through growing church and building
community,
we may see your Kingdom come and be good news for all.
Amen.



Transformed Lives | Growing Church | Building Community
THE KINGDOM OF GOD - GOOD NEWS FOR ALL

Diocesan Board of Education

www.derbyDBE.org