

Newsletter – JUNE 2024

General Election

In partnership with Oxfam, Send My Friend, and CAFOD, Christian Aid have written learning materials to support pupils to learn, explore, and reflect on the general election as global citizens. They have also devised a courageous advocacy activity that supports pupils to reflect on the Sustainable Development Goals and to create their own shared manifesto for the world that reflects their values and priorities as active global citizens. Participating schools are encouraged to make use of a press release template to share their ideas, and to where possible, share them with their local candidates.



Resources are not party political – and schools are offered clear instruction to engage with candidates across the parties. For further details, contact jgrear@christian-aid.org.

Partnership Agreement ****EARLY BIRD DISCOUNT****



Sign up before the end of summer term to receive 10% discount.

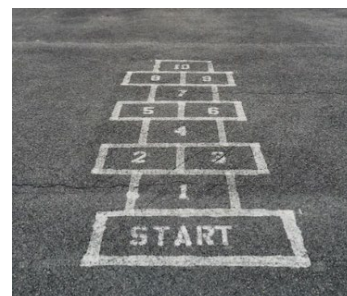
We are a family of church schools & partnership is a fundamental principle of being a church school. We are very aware of the constant demands on schools' budgets & seek to provide all support for partnership subscribers at an affordable level. Schools which access our support usually recoup the cost of signing up. All details are on our website [HERE](#).

Admissions Appeals

Derby DBE offers an independent clerking service for admissions appeals underpinned by our Christian ethos.

Schools who sign up to the Partnership Agreement, receive their first 2 free appeals free of charge.

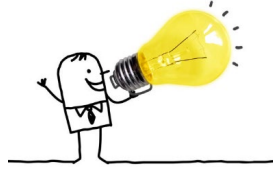
If your school has admission appeals and you would like to use our service, please contact us at officedbe@derby.anglican.org



Contact Details for Governing Body

It is important that we hold the correct contact email addresses for your chair, clerk and foundation governors.

If you have people stepping down at the end of this academic year, do please remember to tell us and email [DBE Office](#) with details.



Spotlight on Dinting CE Primary School



On 24 May, Dinting CE Primary marked its 150th anniversary and invited Bishop Libby to celebrate with the school community. This included a service of thanksgiving at Holy Trinity Church followed by a picnic with family and friends of the school.

Bishop Libby commemorated the occasion with the planting of a tree and burial of a time capsule!

Do let us know if you would like a spotlight on your school!



Capital Works

Derby DBE has a statutory duty to ensure our church schools provide a suitable, healthy environment for children's education and that school buildings and sites are well maintained.

Please note that **all church schools (VA, VC and academies)** must obtain the approval of Derby DBE and the site trustees before any building work is undertaken. For example:

- Alterations to or extension of existing buildings
- Construction of new buildings or erection of modular/prefabricated buildings
- Alterations to or extension of car parks, playgrounds, or other significant site features
- Refurbishment works to kitchens and sanitary facilities
- Renewal of building services such as heating or electrical installations
- Renewal of drainage services
- Works not listed above where the contract value is more than £10,000

The approval form and guidance can be downloaded from website [HERE](#)

Do remember to visit our [website](#) for lots of useful information and guidance. Previous newsletters can be viewed [here](#).

Upcoming Briefings



Headteachers

10:00 Wednesday 10 July

Governors (chairs, clerks, foundation governors)

19:00 Wednesday 10 July

Collective Worship

16:00 Tuesday 18 June - Spirituality

If you would like details, please contact [Liz](#)

Upcoming Training

Understanding Christianity

Aimed at those who are new to the course or teachers who need a refresher.

Wednesday 26 June CHANGE OF DATE

Venue Church House, Derby

Fee per session: PA £80 / Non PA £120

Booking form [HERE](#)



Primary RE Development Training

Ideal for RE Subject Leads, teachers, support staff & any member of staff who will be teaching or helping to deliver RE. Delivered in person by Fiona Moss RE Today.

3 dates / venues are offered for each session.

Session 3 – Summer Term – Spirituality and RE

Monday 01 July 2024, 13:00 - 16:00 Chapel-en-le-Frith CE Primary School

Tuesday 02 July 2024, 09:00 - 12:00 Hartington Village Hall

Tuesday 02 July 2024, 13:30 - 16:00pm Derby Church House

Fee per session: PA £40 / Non PA £85 Booking form [HERE](#)

Springs Dance Company

Springs provides an exciting way for children to interact with the RE curriculum through physical movement and creativity. They are now taking bookings for “The Good Samaritan”, “Creation” and “A Christmas Story”. If you would like more information, visit their [website](#)



Supporting our Schools to TRANSFORM – GROW – BUILD

Showing **generous faith, courageous hope & life-giving love**, Derby DBE's actions will be to:

- affirm and strengthen our relationship with school leaders and governors,
- offer a high-quality training & development programme for school leaders, governors, clergy, RE & CW practitioners.